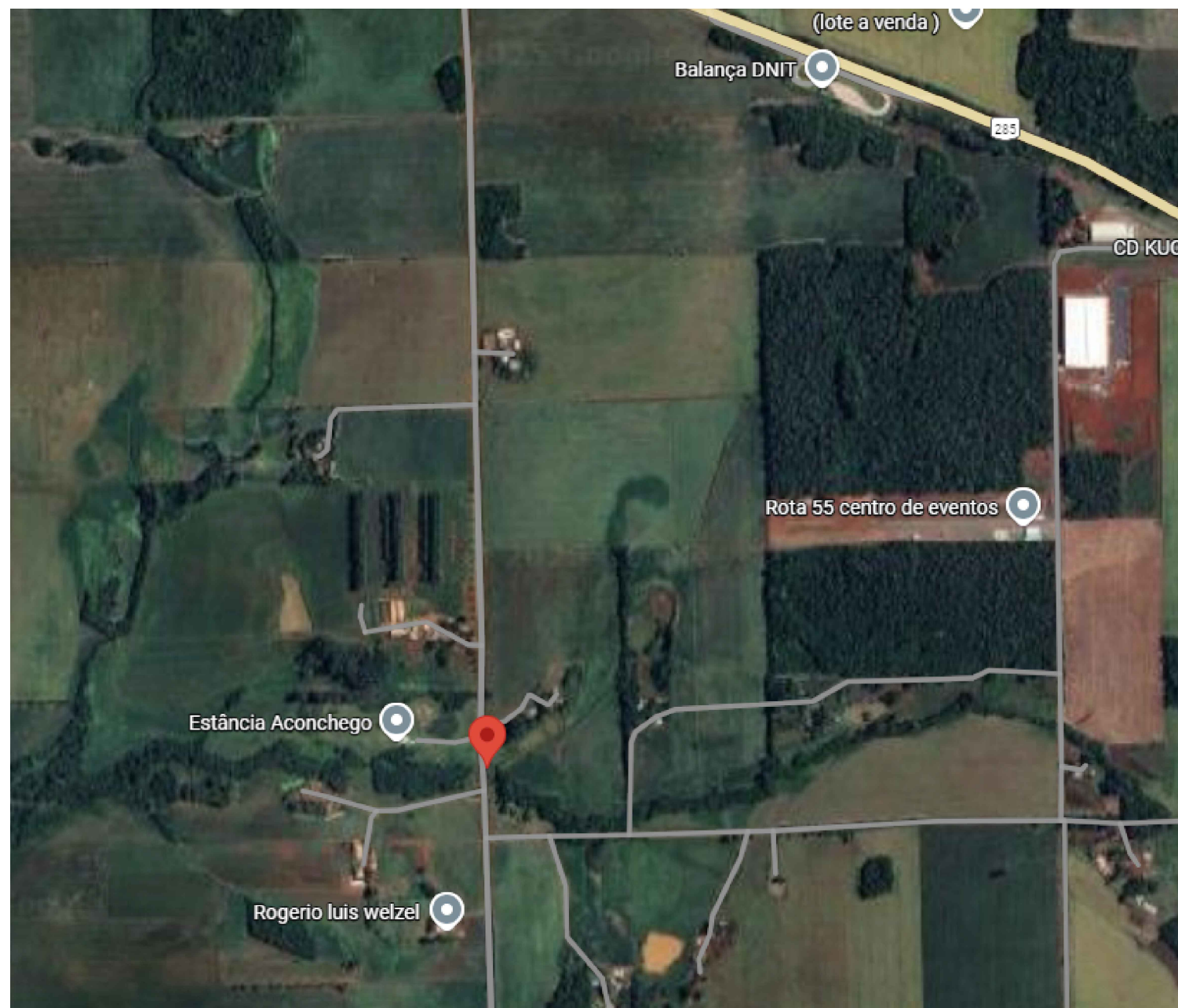
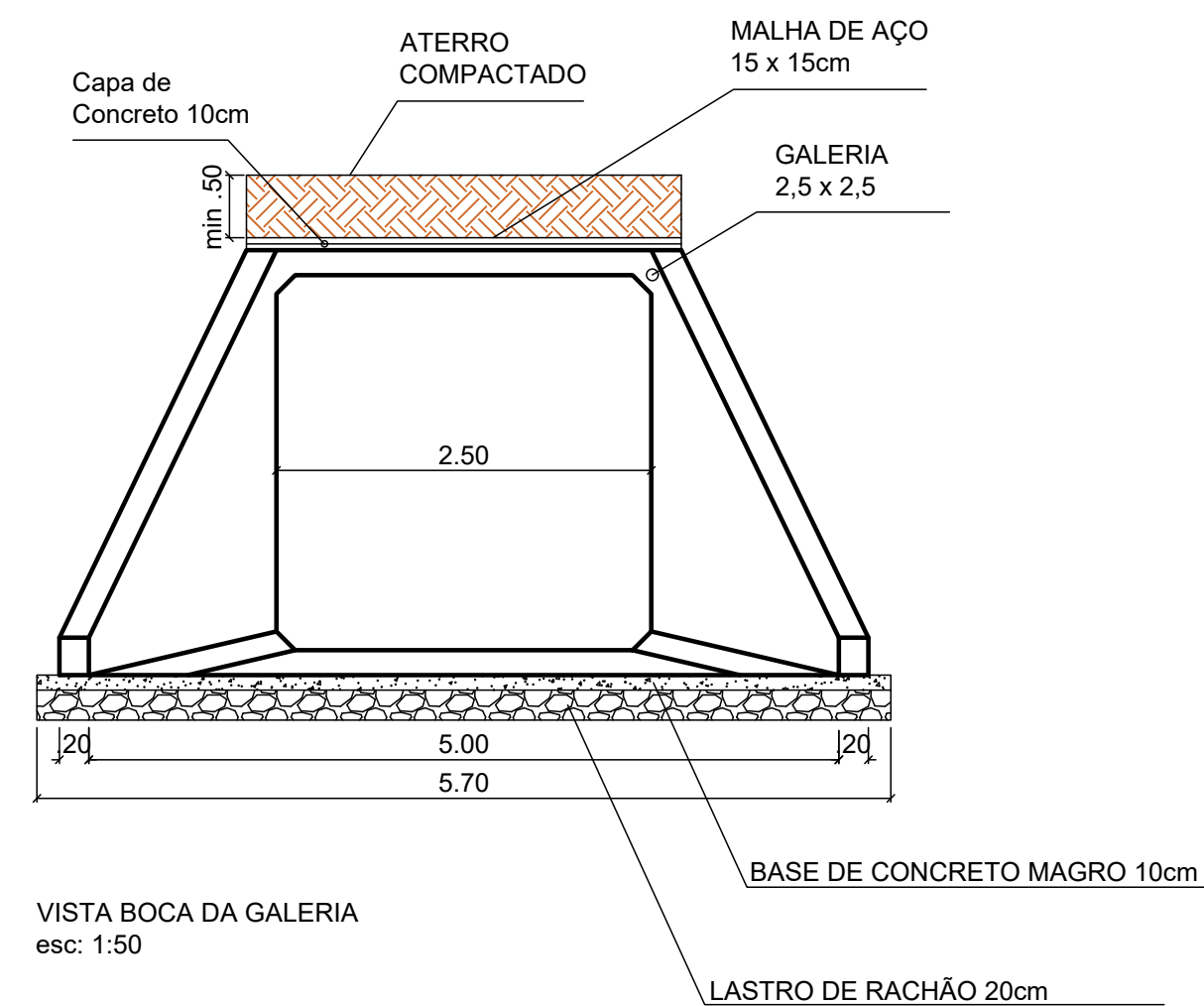
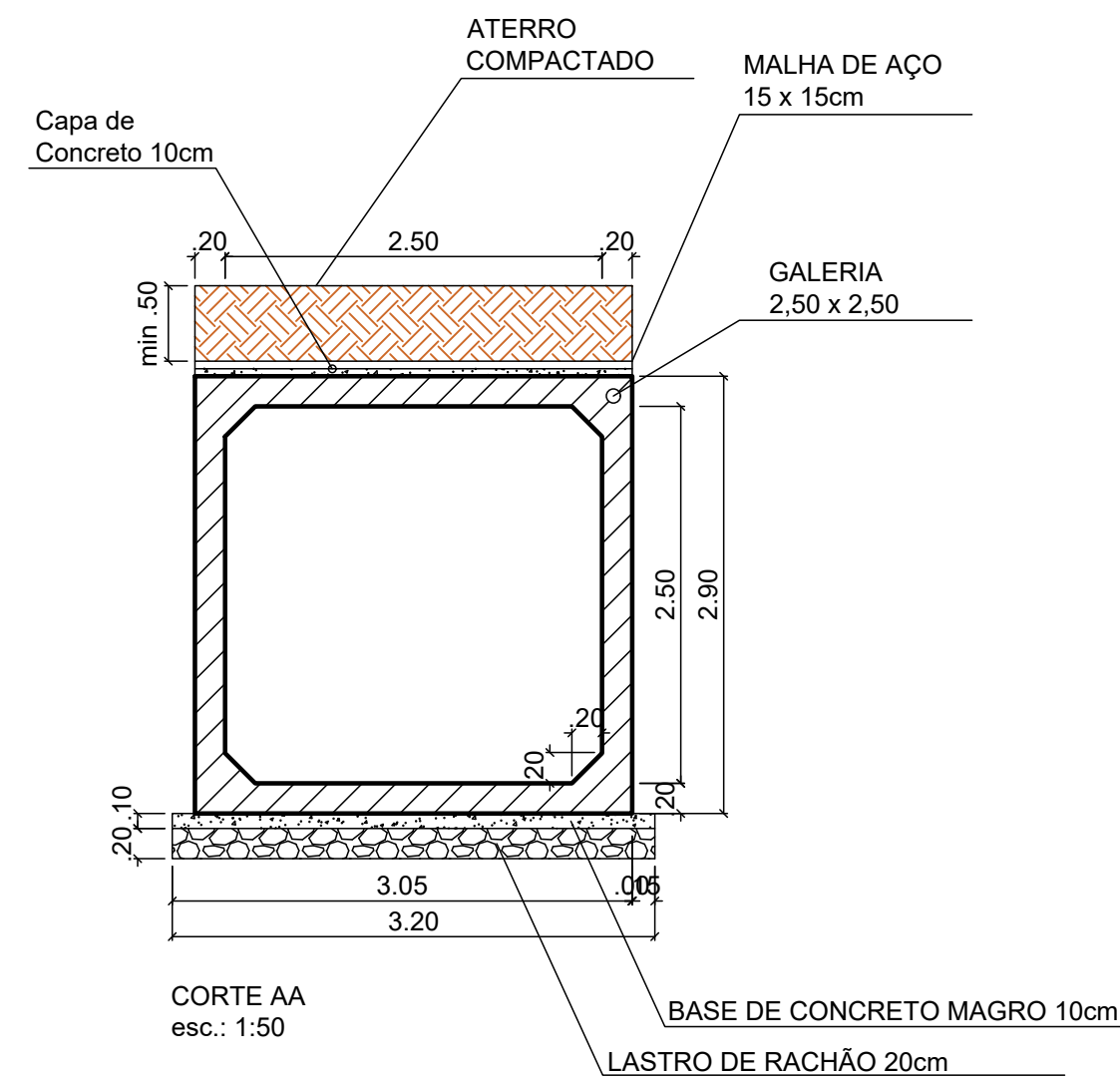
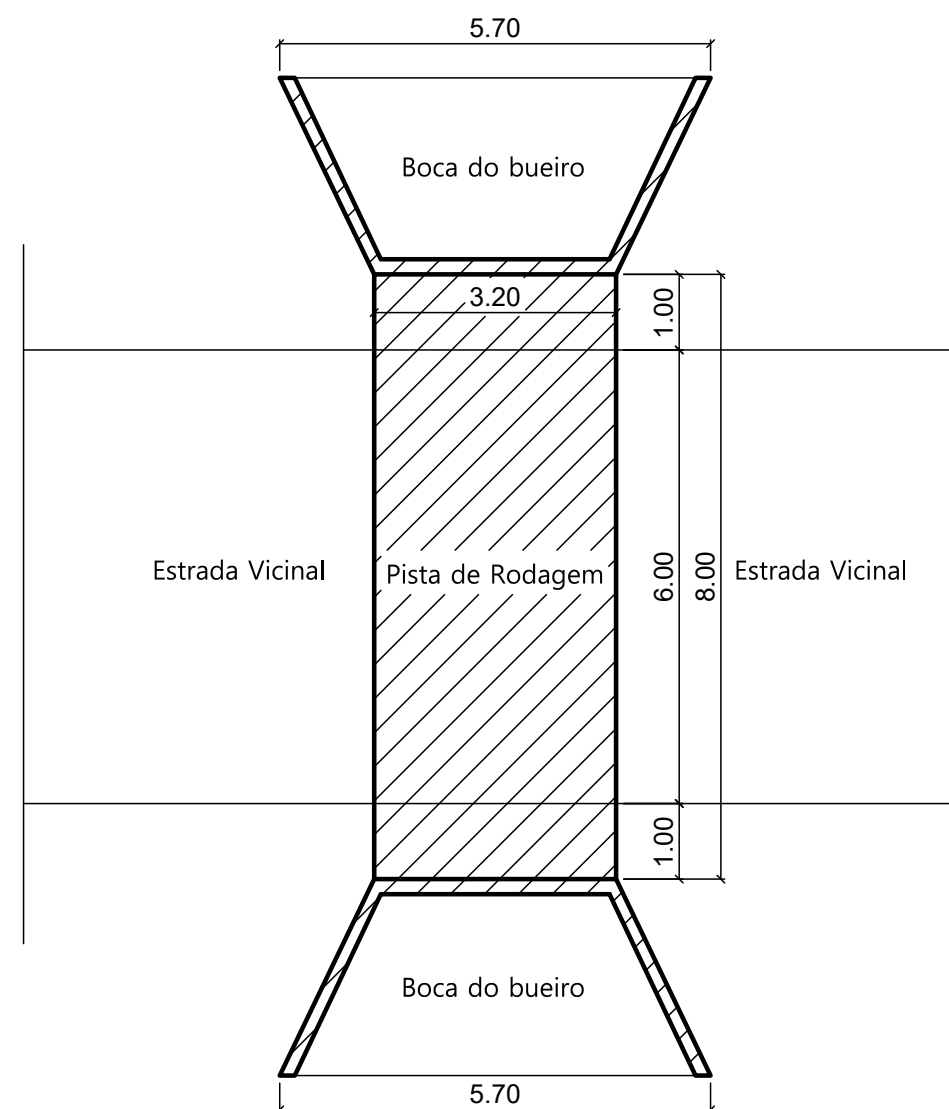



GALERIA DE CONCRETO PRÉ MOLDADO  
2,5x2,5/8,00m



COORDENADAS - 28°24'25.4"S 53°58'22.4"W  
Sem escala

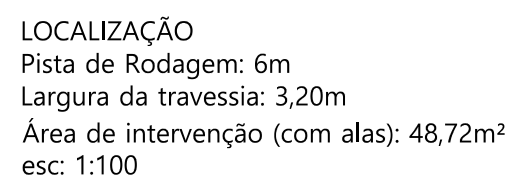
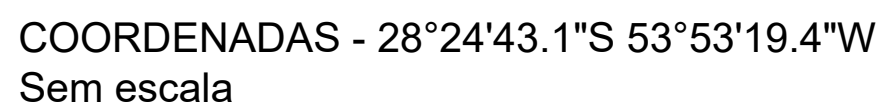
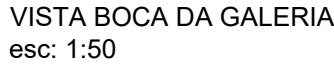
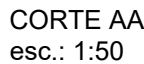



LOCALIZAÇÃO  
Pista de Rodagem: 6m  
Largura da travessia: 3,20m  
Área de intervenção (com alas): 48,72m²  
esc: 1:100

		<b>PROJETO DE GALERIA EM CONCRETO PRÉ MOLDADO</b>	
LOCAL: DISTRITO ESQUINA HEIDMANN		TIPO: PLANTA BAIXA	
		DATA: NOV/25	
		REVISÃO: 00	
		ESCALA: INDICADA	
Andrei Cossetin Prefeito Municipal	Leonardo Rocha Andrzejski Engenheiro Civil CREA RS237916	PRANCHA: 01 - 02	



2,5x2,5/8,00m



	<h1>PROJETO DE GALERIA EM CONCRETO PRÉ MOLDADO</h1>	
	<p><b>LOCAL:</b> DISTRITO SEDE - PARADOR</p>	<p><b>TIPO:</b> PLANTA BAIXA</p> <p><b>DATA:</b> NOV/25</p> <p><b>REVISÃO:</b> 00</p> <p><b>ESCALA:</b> INDICADA</p>
<p>_____ Andrei Cossetin Prefeito Municipal</p>	<p>_____ Leonardo Rocha Andrzejski Engenheiro Civil CREA RS237916</p>	<p><b>PRANCHA:</b> 02 - 02</p>